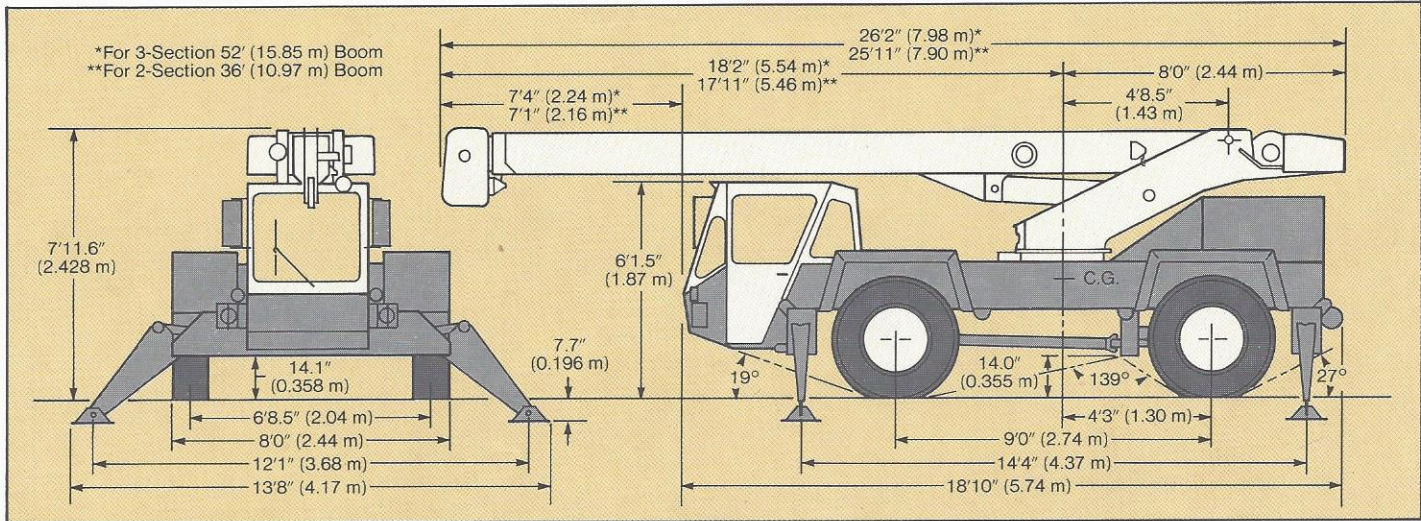


LORAIN® LCD SERIES—COMPACT, POWERFUL, VERSATILE

DIMENSIONS (standard-equipped)



SPECIFICATIONS (standard-equipped)

Swing Speed	2.9 rpm	
Gross Vehicle Weight	27,255 lbs (12 363 kg)*	
Engine		
Make and Model	Cummins 4B3.9 (Std.)	Caterpillar 3054 DIT (Opt.)
Type	4-cylinder	4-cylinder
Bore and Stroke	4.02 X 4.72 in. (101.1 x 119.9 mm)	3.94 x 5.0 in. (100 x 127 mm)
Displacement	239 cu in. (3.9 l)	243 cu in (4.0 l)
Max. Gross H.P.	80 hp @ 2800 rpm	109 hp @ 2400 rpm
Max. Gross Torque	184 lbs•ft/1200 rpm	280 lbs•ft/1500 rpm
Aspiration	Natural	Turbocharged
Air Filter	Dry	Dry
Electrical	24 volt	
Alternator	40 Amp	55 Amp
Battery	(2) 12V-800 CCA	
Fuel Capacity	44 gallons (163 liters)	44 gallons (163 liters)

*Add 590 lbs. (268 kg) for optional 15 ft. (4.57 m) swing-on jib. Gross vehicle weight for LCD 150 with optional 36 ft. (10.97) boom is 24,725 lbs (11 215 kg).

ENGINE PERFORMANCE

Gear	Forward Drive	Maximum Speed		Maximum Tractive Effort		Gradeability @ Stall	
		Std. *	Opt.	Std.	Opt.	Std.	Opt.
1	2 or 4	3.6 mph (4.8 km/h)	3.1 mph (4.2 km/h)	17,355 lbs (7871 kg)	19,702 lbs (8935 kg)	73.1%	91.0%
2	2 or 4	7.7 mph (10.3 km/h)	6.7 mph (9.0 km/h)	7,941 lbs (3601 kg)	9,016 lbs (4089 kg)	26.8%	31.1%
3	2 or 4	18.4 mph (24.7 km/h)	16.4 mph (22.0 km/h)	3,198 lbs (1450 kg)	3,631 lbs (1647 kg)	9.3%	10.8%
4	2 or 4	23.0 mph (30.8 km/h)	24.2 mph (32.5 km/h)	2,115 lbs (959 kg)	2,401 lbs (1089 kg)	5.4%	6.5%

HYDRAULIC EQUIPMENT

Pumps (Std. Engine)	Two gear type pumps in tandem, driven off transmission. Combined system capacity is 37 gpm (140 l/min). 1–20 gpm (76 l/m) @ 2750 lbs/in ² (210kg/cm ²) for steer swing, boom hoist, telescope, outrigger, and winch boost. 1–17 gpm (64 l/min) @ 2650 lbs/in ² (185 kg/cm ²) for winch
Swing Motor	Geroler type
Boom Hoist Cylinder	8.5" (22 cm) bore x 3.5" (8.9 cm) rod x 39.3" (100 cm) stroke
Reservoir Capacity	24 gallons (91 liters)
System Capacity	43 gallons (163 liters)
Filtration	10 micron return line filter 140 micron suction element

WINCH PERFORMANCE

Max. Line Speed (no load)	
First Layer	177 fpm (54 m/min)
Fourth Layer	236 fpm (72 m/min)
Full Drum	275 fpm (84 m/min)
Max. Line Pull	
First Layer	7460 lbs (3384 kg)
Fourth Layer	5600 lbs (2540 kg)
Full Drum	4800 lbs (2177 kg)
Permissible Line Pull	6350 lbs (2880 kg)
Drum Dimensions	
Diameter	8.5 in (216 mm)
Length	12.2 in (311 mm)
Flange Diameter	14.6 in (370 mm)
Drum Capacity	
Max. Storage	439 ft (134 m)
Max. Useable	350 ft (107 m)*
Cable	0.50 in x 275 ft (12.7 mm x 84 m)

*Based on minimum flange height above top layer to comply with ANSI B30.5

WE RESERVE THE RIGHT TO AMEND THESE SPECIFICATIONS AT ANY TIME WITHOUT NOTICE. THE ONLY WARRANTY APPLICABLE IS OUR STANDARD WRITTEN WARRANTY APPLICABLE TO THE PARTICULAR PRODUCT AND SALE. WE MAKE NO OTHER WARRANTY, EXPRESSED OR IMPLIED.



A wholly-owned Subsidiary of Terex Cranes, Inc.

Koehring Cranes, Inc.
106 12th Street S.E. • Waverly, Iowa 50677-9466 USA
(319)352-3920 • FAX: (319)352-5727